



Everett Community College Customer Story

Building Cyber Awareness Across Campus



www.caniphish.com

About Everett Community College



Everett Community College serves a diverse community of nearly 1,400 employees and more than 15,000 students across Washington State in the United States of America. The college was founded in 1941 and serves students seeking a wide variety of education options, such as obtaining four-year degrees, earning certificates, training for a new job, experiencing hands-on training in professional and technical programs, learn English, developing basic skills, finishing high school, training for a promotion, or to learn just for fun.

Challenges Everett Community College Faces



— **David Anderson**
Technology Services
Security Manager

Everett Community College serves a large campus community. As part of its growing focus on cybersecurity, the college launched its first phishing simulations to help staff recognize and respond to modern threats. The first campus-wide test revealed valuable insights, sparking conversations across departments about awareness and security responsibilities.

Like many higher education institutions, Everett operates in an environment where phishing and ransomware are constant risks. Recent incidents at other colleges in Washington State reinforced the need to build resilience through practical, people-focused education.

“

Just the fact that people are talking about it and know we're watching provides awareness that wasn't there before.

”

Why did you choose CanIPhish over other options?

We evaluated 7 vendors before deciding on CanIPhish.

CanIPhish stood out by delivering exactly what the college needed. Simple, effective phishing simulations paired with remedial training at the right price point. Unlike other platforms that focused heavily on dashboards or bundled features, CanIPhish demonstrated real training and real value in action during the initial demo. We were sold.



“

It was what we wanted without all the extra stuff we did not want.

”

How has CanIPhish impacted your organization?

Awareness quickly became part of everyday conversations on campus.

Staff have started talking about the phishing simulations on their own, helping the program gain natural momentum. The next campaign, themed around suspicious Google sign-ins, continues to build on that growing engagement.

Supervisors now receive automated reminders to help improve completion rates, and the security team can track who needs additional support. Even in its early stages, the program has increased visibility, accountability, and overall awareness across the college.



“

People come up to me now and say, 'Oh, that's the guy sending the phishing emails.' It's good! It means they're thinking about it.

”

How has CanIPhish improved security culture?

A stronger security culture is emerging.

The simulations have raised visibility, encouraged leadership involvement, and positioned cybersecurity as a shared responsibility. The college plans to highlight the results of its CanIPhish campaigns in upcoming board meetings. This is a sign that awareness is becoming an institutional priority.

Everett's environment includes a mix of full-time and part-time staff, some of whom teach only during active semesters. CanIPhish helps meet legal and policy requirements by making it easy to assign, track, and document training completion across this diverse workforce.

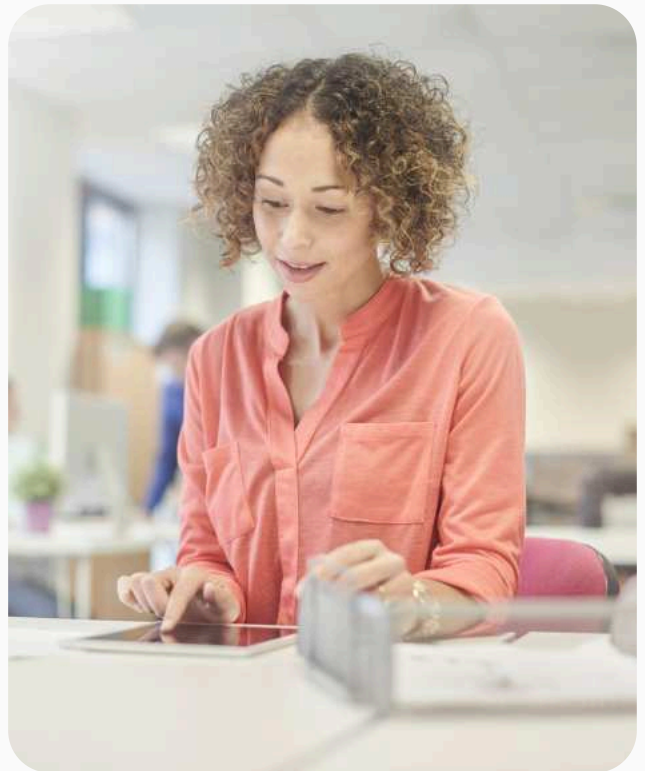


What do you like best about CanIPhish?

Setup was quick and straightforward.

Setting up CanIPhish was quick and straightforward. The IT team had the Gmail add-on installed and mail injections configured in under an hour. Clear guides and short setup videos made it easy to follow along, and within the same day, Everett was running its first test campaigns.

Once live, the platform's simplicity stood out. Campaign creation felt intuitive, reporting was instantly useful, and everything worked as expected. The team could see results immediately and start acting on them.



“

I've already told people it's a great product. It's easy to use, gets people's attention, and does exactly what it promises.

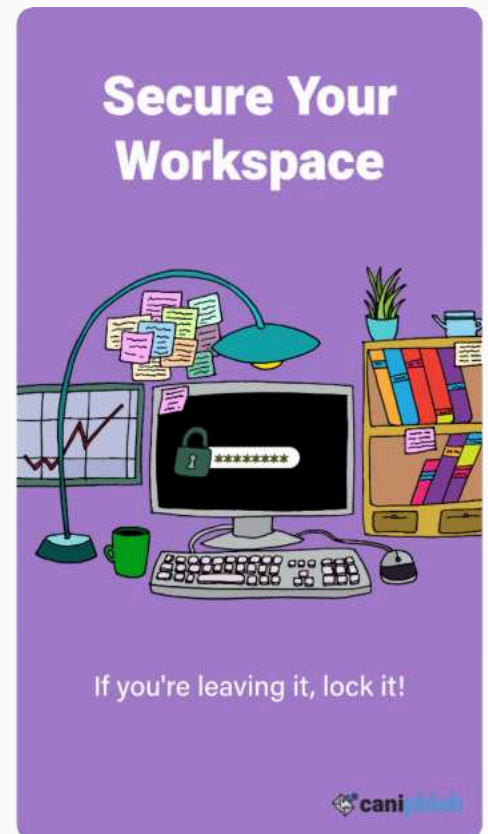
”

Would you recommend CanIPhish to others?

Everett Community College is already sharing its success.

During Cybersecurity Awareness Month, the team distributed CanIPhish posters and resources to other community colleges across the state, encouraging peers to strengthen their own awareness programs.

The platform has proven simple, reliable, and well-suited for education environments where staff roles vary widely. By combining realistic simulations with easy-to-use reporting and training tools, CanIPhish has helped Everett build a foundation of awareness that reaches across departments.



Additional Insights



Everett Community College continues to strengthen its cybersecurity posture.

Each simulation reinforces practical awareness, helping staff recognize and respond to threats with confidence.

The college plans to continue running regular phishing simulations and awareness campaigns as part of its long-term strategy. Leadership engagement is growing, and the results speak for themselves. People are talking about security, learning from experience, and building safer habits every day.